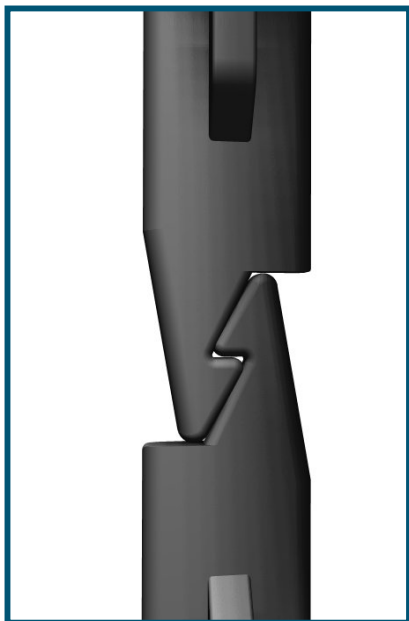


# INTEGRASPEC<sup>®</sup>

"The User Friendly ICF"



*Discover the IntegraSpec Difference!*



- **Patented Interlock**

Stops form lift while placing concrete, ensuring straight walls time after time.

Eliminates foam, glues, tie wires and steel hooks to save more money and time on site.

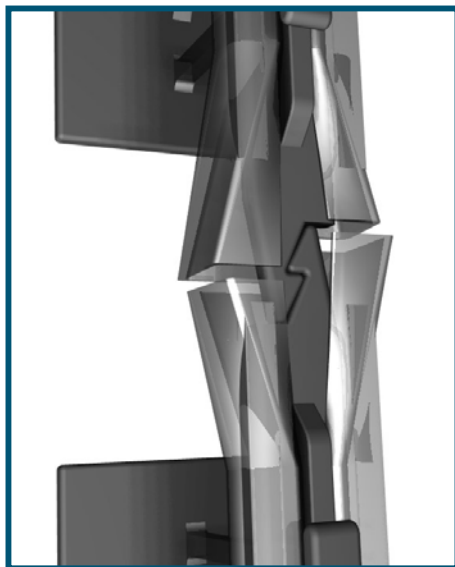
**"Compare the Installed Cost of IntegraSpec walls and notice the savings"**

- **Exclusive Anti Form Compaction Device**

Built into every panel at 8" on center, each panel is placed and secured on top of the next.

Walls are straighter and more accurate without the guesswork when forming openings.

**"Control wall movement and eliminate waves and bulges for the greatest accuracy"**



*Specify Integrity* in your next project  
[www.integraspec.com](http://www.integraspec.com)