

IntegraSpec[®] .COM

The User Friendly ICF

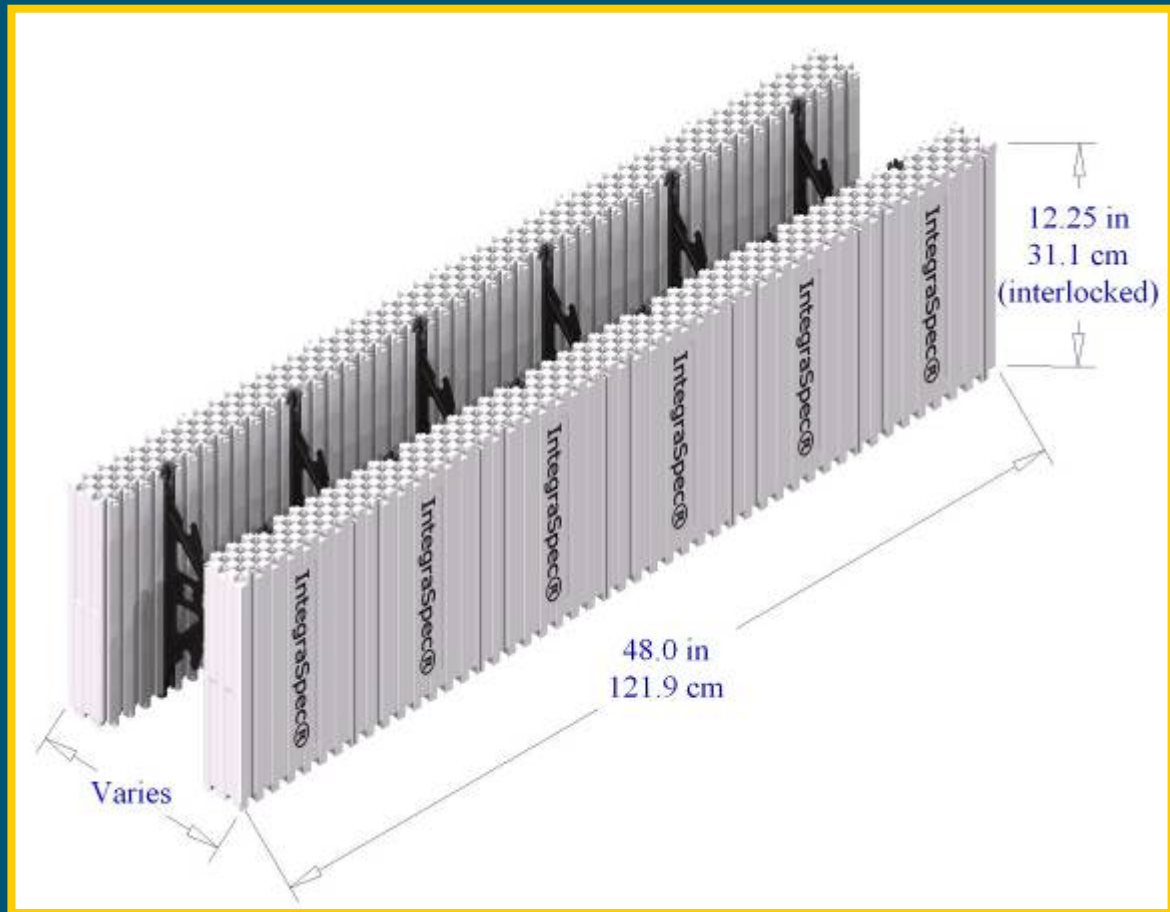
Insulating Concrete Forms

By PHIL-INSUL CORPORATION

Welcome

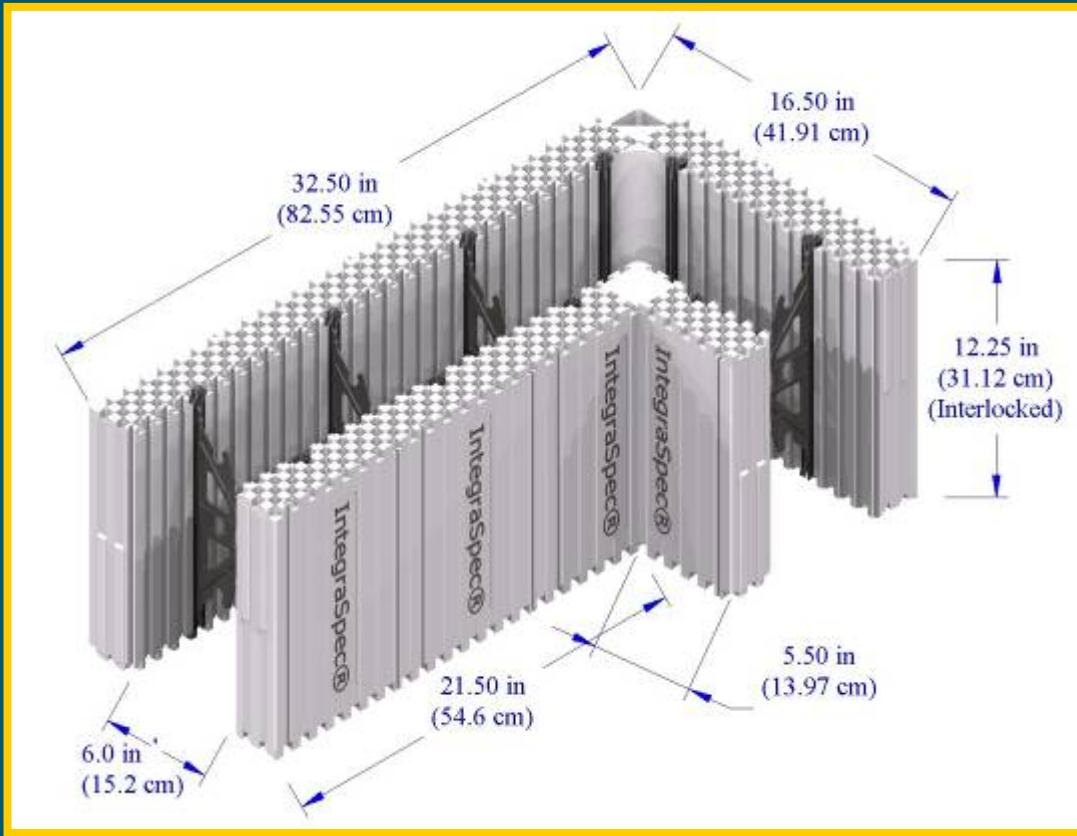


Integra Products



- Assembles using **2 IntegraSpec Standard Panels + 6 IntegraSpec Spacers**
- Includes patented bi-directional / reversible technology
- Superior design dramatically reducing form lift, compression and blow outs
- The only true panelized ICF wall system designed to recognize the power of concrete

Standard Unit



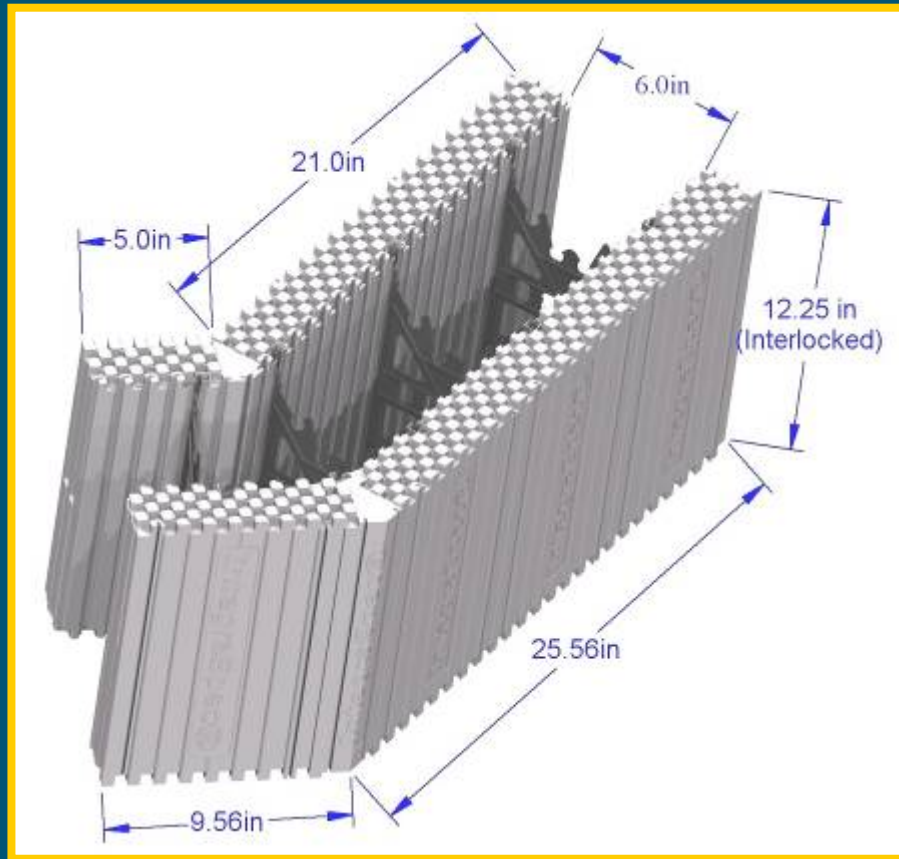
- Assembles using a 6" IntegraSpec Corner Set + 4 IntegraSpec Spacers 6"
(Option: IntegraSpec 90° Corner 4" - Requires 2" cut from exterior panel, mitered standard panels for interior + 4-4" Spacers)

- Same patented technology as the IntegraSpec Standard Panel

- Additional inserts found close to exterior corner for drywall/siding fastening

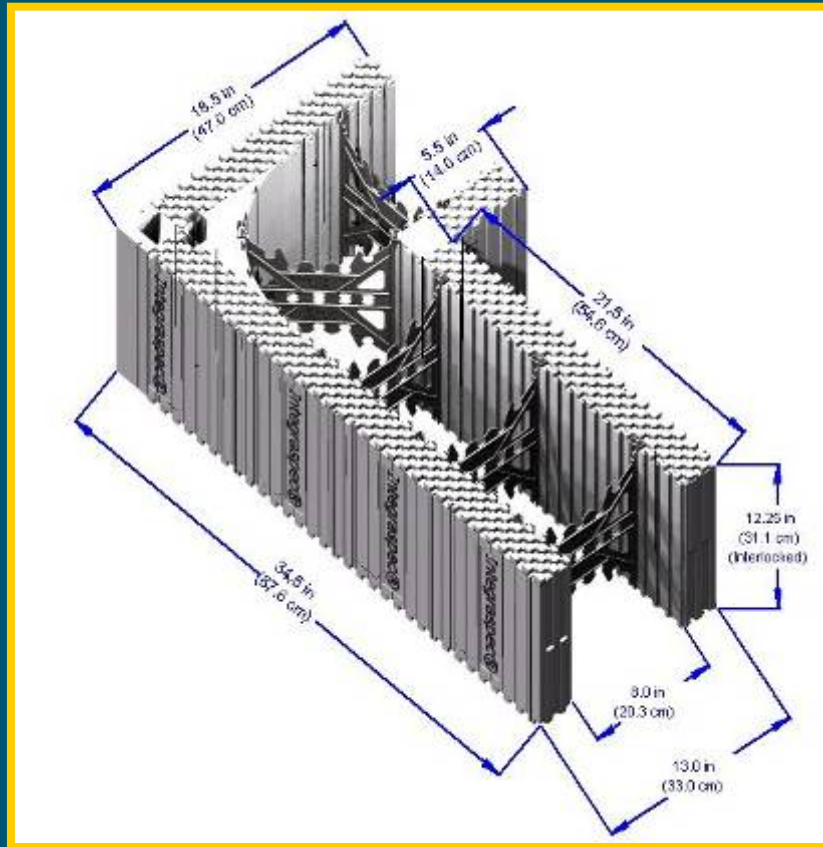
- Extra fastening opportunity directly in exterior corner by inserting wood/steel strip in void

90° Corner Unit - 6"



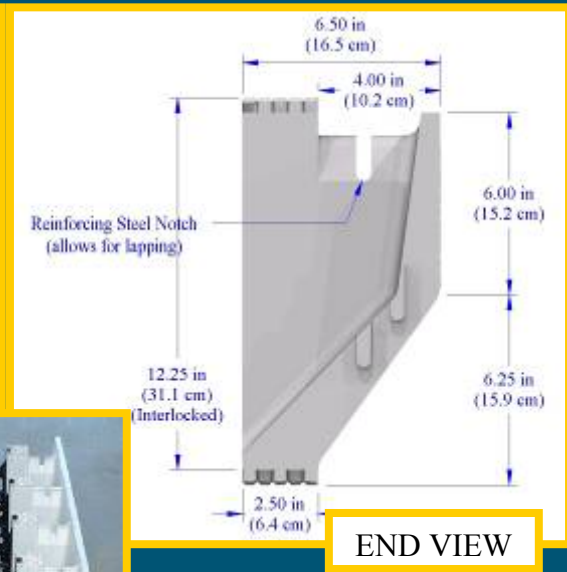
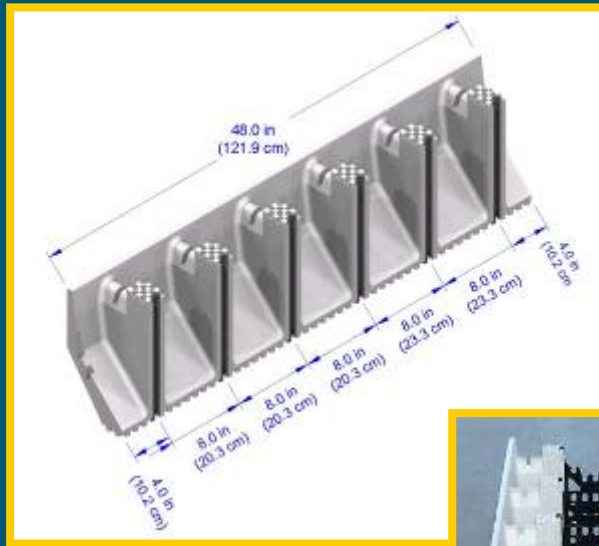
- Assembles using an IntegraSpec Inside 45° Panel + IntegraSpec Outside 45° Panel + 4 IntegraSpec Spacers 6"
- (Option: IntegraSpec 45° Corner 8" & 10" - Requires cut from ends of panels + 4 Spacers)
- Same patented technology as the IntegraSpec Standard Unit

45° Corner Unit - 6"



- Assembles using an IntegraSpec 90° Corner Set 8" + 5 - 8" IntegraSpec Spacers
 (Option: IntegraSpec 90° Corner 10" - Requires 2" cut from ends of panels + 4-10" Spacers
 + optional 6" Spacer & 4" Spacer held by the IntegraSpec "H" Clip in the corner)
- Same patented technology as the IntegraSpec Standard Panel
- Additional inserts found close to exterior corner for drywall/siding fastening

90° Corner Unit - 8"



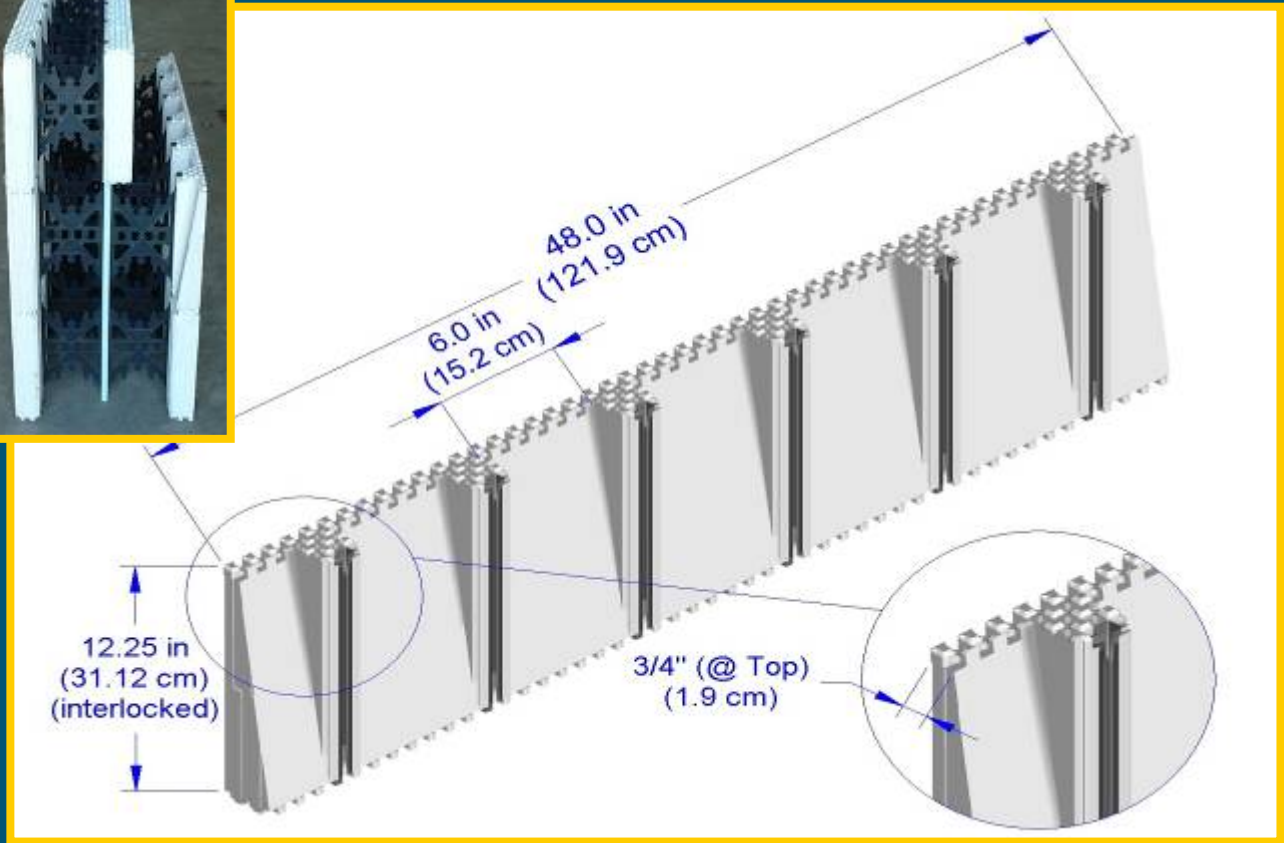
- Assembles using an IntegraSpec Brickledge Panel + IntegraSpec Standard Panel+ 6 IntegraSpec Spacers – Any Size (Also requires rebar stirrups)

(Option: Double Brickledge Panel - Requires 2 IntegraSpec Brickledge Panels + 6 Spacers)

- Engineered for maximum support of brick and easily stepped for changing grades

- Engineered for interior floor/joist support

Brickledge Panel

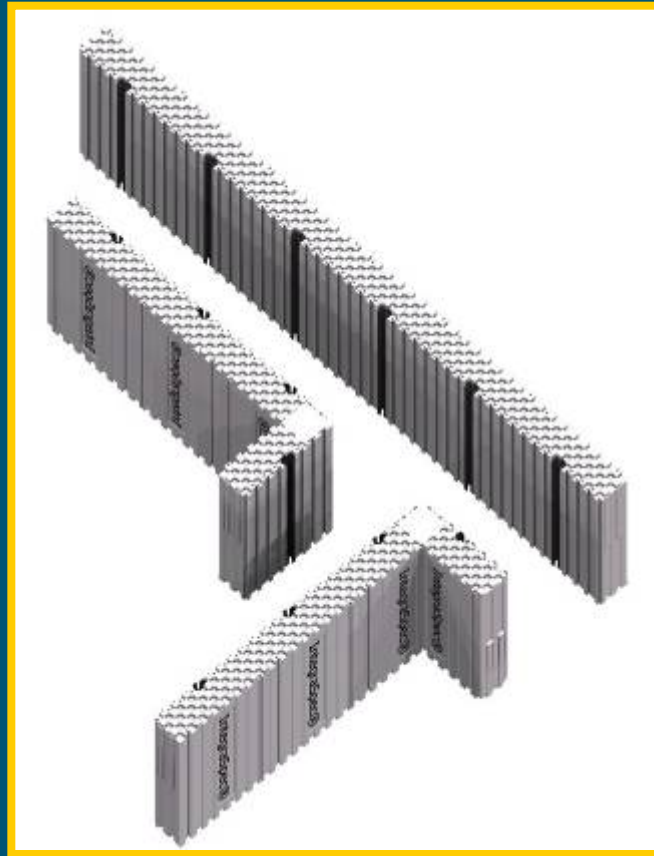


- Assembles using an IntegraSpec Taper Top Panel + IntegraSpec Standard Panel + 6 IntegraSpec Spacers - Any Size

(Option: Double Taper Top Panel: Requires 2 IntegraSpec Taper Top Panels + 6 Spacers)

- Engineered to provide additional concrete surface at the top of an IntegraSpec wall**
- Provides the necessary support for brick at the top of a foundation or joist surround**

Taper Top Panel



- Assembles using 2 IntegraSpec "T" Wall Panels + and IntegraSpec Standard Panel+ IntegraSpec Spacers to match – (8" works best)
(Option: "T" Wall Panels 6" : Requires 2" removed from Standard Panel at top of "T")
- Provides better interlocking protection at corners

Integra "T" Walls



4 in (10.2cm)



5 in (12.7cm)



6 in (15.2cm)



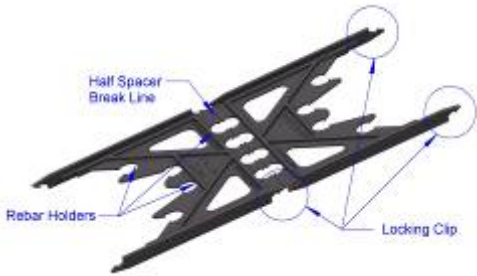
8 in (20.3cm)



10 in (25.4cm)



12 in (30.5cm)



Rebar Holders

Half Spacer
Break Line

Locking Clip



Half Spacer



New

5 In (12.7cm)

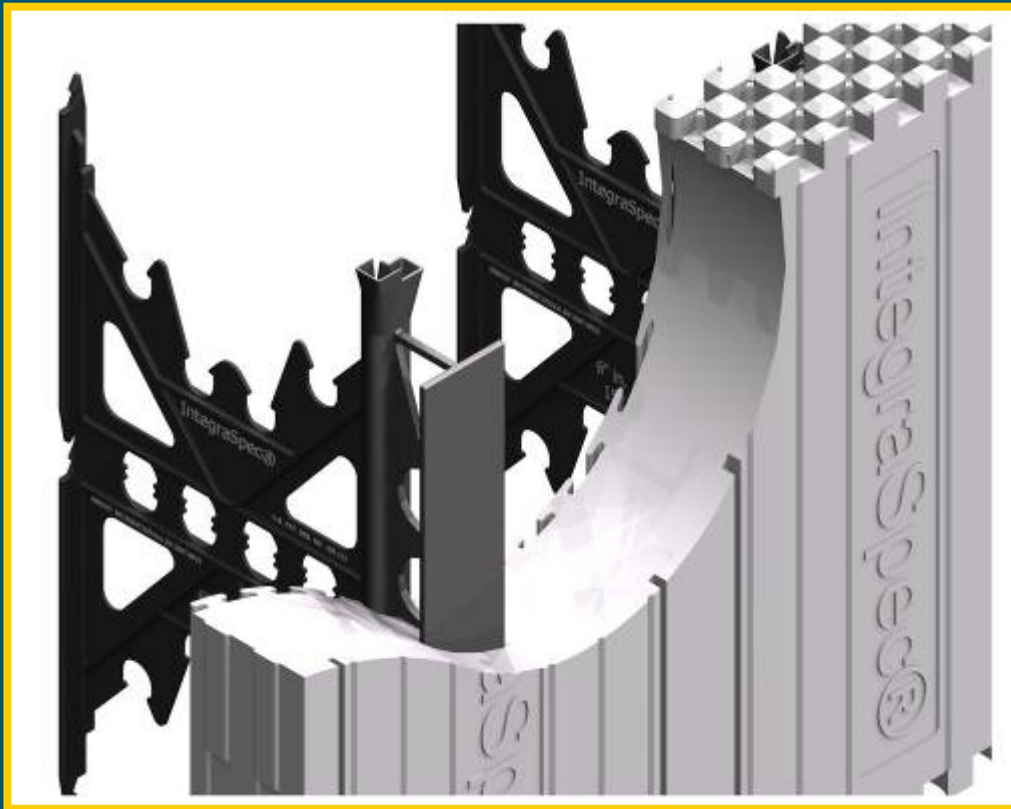
- Available in 4", 5", 6", 8", 10", and 12" widths

- Uniquely design to provide optimal concrete flow

- Interlocks on both ends to eliminate form lift when placing concrete

- Easily adjusts to half heights maintaining interlocking feature

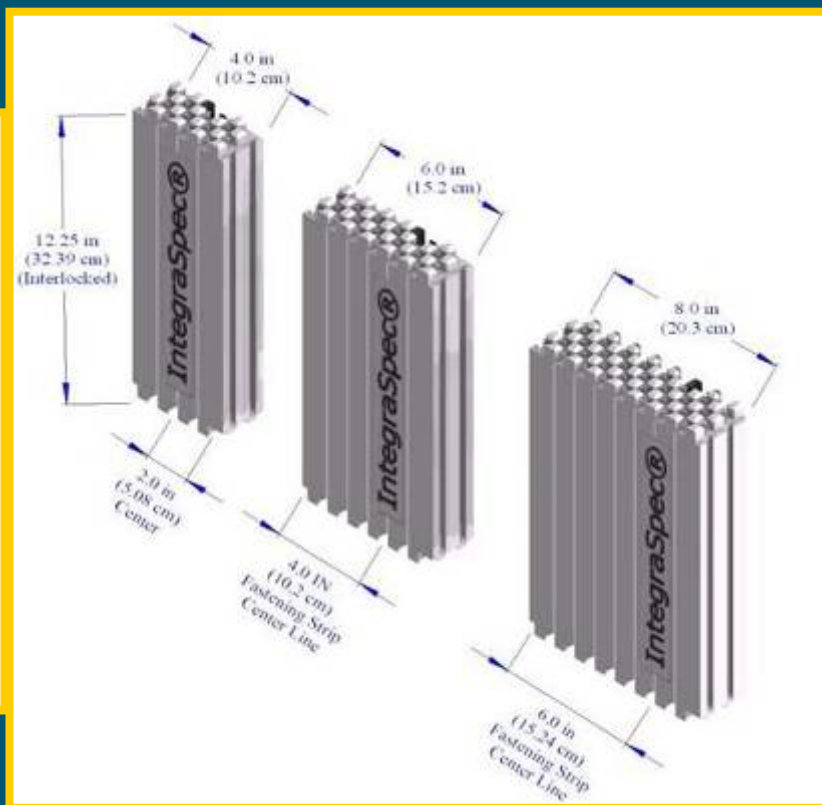
Integra Spacers



- Vertical Fastening Strip/Stud

- Tested to provide stronger pull resistance**
- Recessed $\frac{3}{4}$ " behind easy to locate embossed IntegraSpec Logo**
- $\frac{5}{8}$ " width provides easy to hit surface for nails and/or screws**
- Made with High Impact Polystyrene for superior fusion to EPS and a stronger wall system**

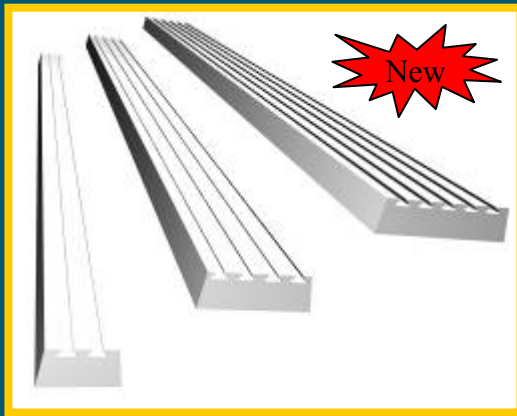
Integra Inserts



- Available in 4", 6", and 8" sizes

- Uniquely designed to provide secure wall ends where necessary**
- Easily slides in place into our dovetail grooves of any IntegraSpec panel**
- Includes an IntegraInsert for convenient installation of windows/doors/framing**
- Provides unequalled insulation protection and a single substrate for stucco**
- Eliminates the need for costly wood or plastic bucks and one less concern of air leaks**

Integra Bucks



- Available in 4", 6", and 8" sizes
- Taper designed to dam bottom of lintels
- Includes a steel furring strip for convenient installation of windows/doors/framing
 - Provides better insulation protection and a single substrate for stucco
- Eliminates the need for costly wood or plastic bucks and one less concern of air leaks
- **NEW!!!** - 2" EPS only Integra Header with dovetail grooves for concrete adhesion

Integra Headers



6" SantaFe Header

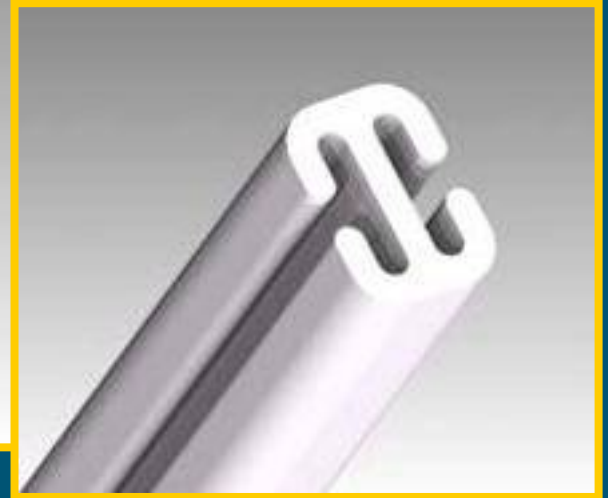
6" SantaFe Buck

8" SantaFe Buck

- Available in 6", and 8" sizes

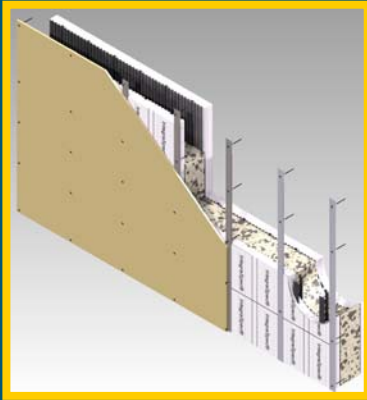
- Integra Bucks and Headers with 30° flair for greater opening exposure (interior or exterior)**
- SantaFe Bucks include 2 furring strips per unit allowing for multi attachment**
 - Provides better insulation protection and a single substrate for stucco**
- Eliminates the need for costly wood or plastic bucks, one less concern of air leaks and easy!**
 - NEW!!! - Provides 1 extra LEED point for increased natural light**

SantaFe Series

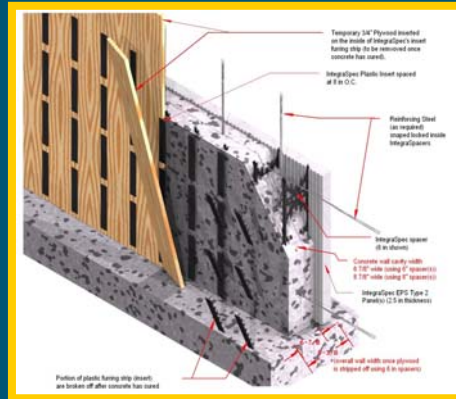


- Available in 4' lengths
- Uniquely designed to join one or more IntegraSpec Spacers
- Offers limitless concrete core thickness opportunities using the same panel system
 - i.e. 12" spacer + 10" spacer = 22⁵/₈" wide concrete
 - Easily cut or stacked to any height required
- Provides enormous design flexibility for commercial use

Integra "H" Clip



Unique

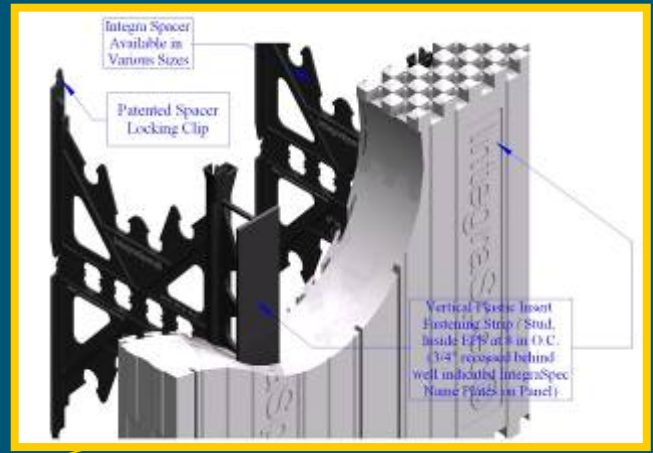
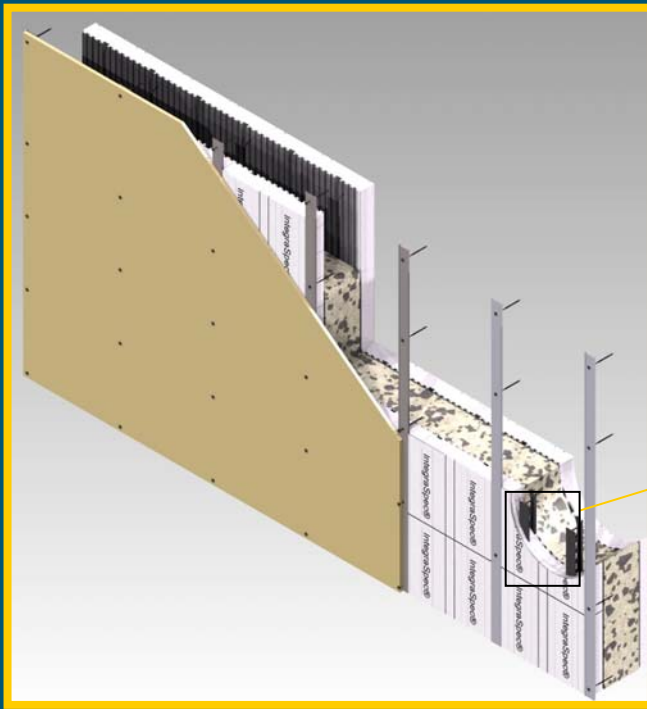


Distinct



Creative

Integra Applications



- Included in all IntegraSpec Panels

- 1 5/8" Grooves provided on all IntegraSpec panels located at 8 inch on center.

(Option: Steel "U" channel(s) provides fastening strip anchored to the concrete core meeting commercial fire codes when installed prior to concrete placement with min. 4 inch non corrosive long wood or concrete screws / fasteners through the channel, IntegraSpec panel and into the concrete cavity.)

Integra Fire Channel



Integra Pilasters



Integra Panel Perfect



Integra Columns

- All IntegraSpec Panels can be used creatively to produce spectacular results!

- Inside corner panels and standards or IntegraBucks create **easy pilasters**

- Crossing the interior webs and bucks create **easy columns**

- Placing the webs after the steel is installed allows any steel configuration and **easy inspection**

Integra Creative